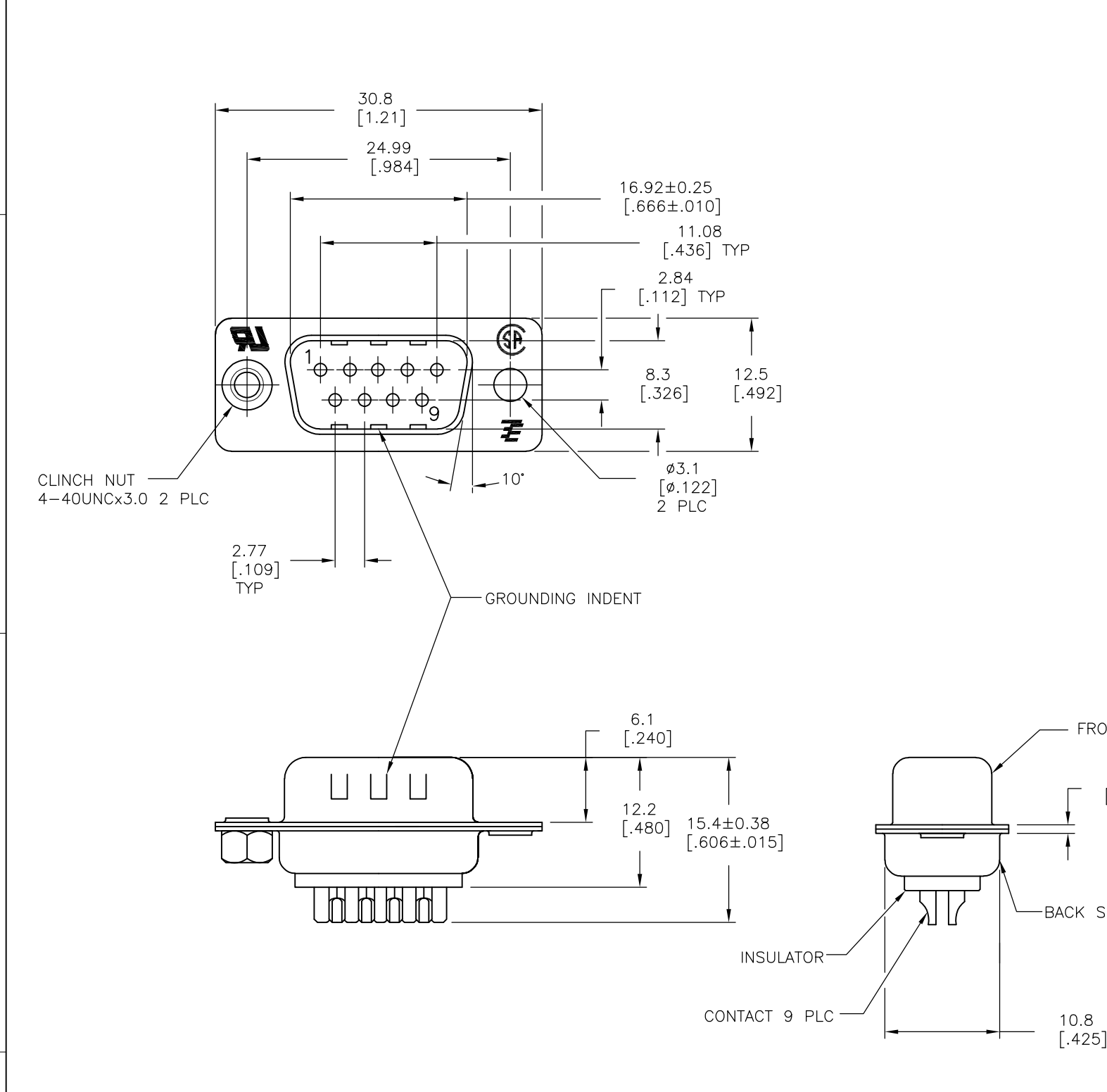


THIS DRAWING IS UNPUBLISHED. RELEASED FOR PUBLICATION
 © COPYRIGHT - By - ALL RIGHTS RESERVED.

LOC	DIST	REVISIONS			
P	LTR	DESCRIPTION	DATE	DWN	APVD
GP	00	AA	REVISED PER ECO-15-010090	16JUL2015	AP DG



- 1 MATERIAL:
FRONT INSULATOR: PBT, 30 %GF, UL94V-0, BLACK COLOR
BACK INSULATOR: PBT, 30 %GF, UL94V-0, BLACK COLOR
CONTACT: BRASS
FRONT & BACK SHELL: STEEL
CLINCH NUTS: BRASS
- 2 FINISH:
CONTACT: GOLD PLATING 0.00002[.0000008] MIN ON CONTACT AREA 0.00229 [.000090] MIN TIN-LEAD PLATING ALL OVER 0.00127[.000050] MIN NICKEL
- 3 CONTACT: GOLD PLATING 0.00076[.000030] MIN ON CONTACT AREA 0.00229 [.000090] MIN TIN-LEAD PLATING ALL OVER 0.00127[.000050] MIN NICKEL
- 4 SHELL: BRIGHT TIN 0.00241[.000095] MIN FULL SHELL
- 5 SHELL: BLUE ZINC: 0.00508[.000200] - 0.00762[.000300] OVER ENTIRE SHELL
- 6 CONTACT: GOLD PLATING 0.00002[.0000008] MIN ON CONTACT AREA 0.00229 [.000090] MIN HOT DIPPED TIN-COPPER PLATING ALL OVER 0.00127[.000050] MIN NICKEL
- 7 CLINCH NUTS: NICKEL PLATING .00305-.00508[.000120-.000200]
- 8 SPECIFICATION
ELECTRICAL CHARACTERISTICS: CURRENT RATING: 3 AMPERES
DIELECTRIC WITHSTANDING VOLTAGE: AC 1000V r.m.s
INSULATION RESISTANCE: 5000 MEGOHMS MINIMUM AT DC 500V
CONTACT RESISTANCE: 10 MILLIOHMS MAXIMUM.
- 9 ROHS 2002/95/EC/COMPLIANT
- 10 PLUG ASSEMBLY MATES WITH ANY 9 POSITION RECEPTACLE IN AMPLIMITE SERIES.
- 11 SOLDER CUP WILL ACCOMODATE 20 AWG MAX WIRE
- 12 CONTACT: GOLD PLATING 0.00076[.000030] MIN ON CONTACT AREA 0.00229[.000090] MIN HOT DIPPED TIN-COPPER ALL OVER 0.00127[.000050] MIN NICKEL PLATING

9	OBSOLETE	STANDARD	NO	NO	6	4	5-747904-4
9	STANDARD	YES	YES	6	4	5-747904-8	
9	STANDARD	NO	YES	12	4	5-747904-5	
9	STANDARD	NO	YES	6	4	5-747904-2	
9	OBSOLETE	STANDARD	NO	YES	6	4	747904-9
9	OBSOLETE	STANDARD	YES	YES	2	4	747904-8
9	OBSOLETE	STANDARD	NO	YES	3	4	747904-5
9	OBSOLETE	STANDARD	NO	NO	2	5	747904-4
9	OBSOLETE	STANDARD	NO	YES	2	4	747904-2
PACKAGING TYPE		7	CLINCH NUTS	GROUNDING INDENTS	CONTACTS	SHELLS	PART NO.

THIS DRAWING IS A CONTROLLED DOCUMENT. DIMENSIONING AND TOLERANCING PER ASME Y14.5M-2009		DWN M.BINNER 03MAR03	TE Connectivity PLUG ASSY, SOLDER CUP, SIZE 1, 9 POSN, HD-20, AMPLIMITE			
DIMENSIONS: mm		CHK R.BENDORF 05MAR03				
TOLERANCES UNLESS OTHERWISE SPECIFIED:		APVD R.BENDORF 05MAR03	NAME			
0 PLC ± -		PRODUCT SPEC	SIZE			
1 PLC ± 0.25		APPLICATION SPEC	CAGE CODE			
2 PLC ± 0.13		—	DRAWING NO			
3 PLC ± 0.05		—	RESTRICTED TO			
4 PLC ± -		WEIGHT	A300779 C-747904			
ANGLES ± 4°		CUSTOMER DRAWING	SCALE 2:1		SHEET 1 OF 1	
MATERIAL		FINISH	REV AA			
1		SEE TABLE				